

# Tool Information

## H3413/H4413/H4493

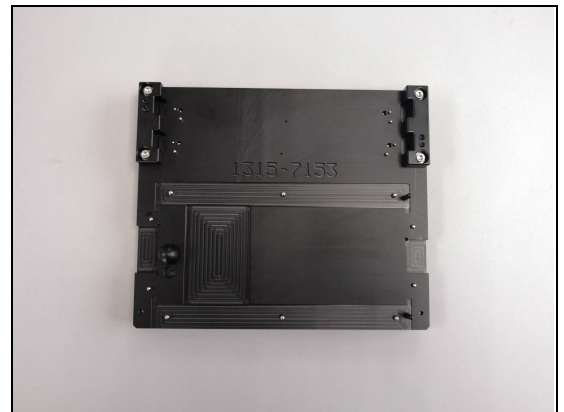
### 1.1 New developed tools

#### New tools for mechanical repair

##### 1. Positioning Tool for Panel adhesives (1315-7153)

For positioning below parts:

- Adhesive Battery Cover Bottom
- Adhesive Battery Cover Left/Right
- Adhesive Battery Cover Top
- Adhesive LCM

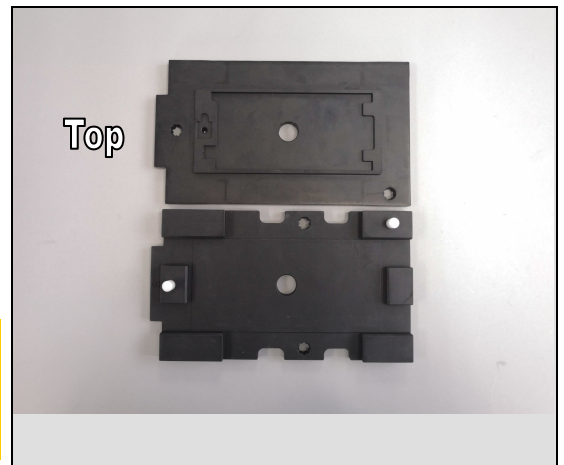


##### 2. Press Rubber Inlay (1315-7148)

(Include both Top and Bottom.)

For pressing Battery Cover Assy.

This tool is used with Generic Wheel Press Tool (1311-1952) together for pressing Battery Cover Assy, or used with Former type of Press Tool and Inlay adapter (1311-2202) together for pressing Battery Cover Assy.



**Refer to 1.4 Optional Tools.**

**Do not use or store this tool in direct sunlight.**

**Continuous sunlight exposure will cause degradation of rubber (hardening).**

## 1.2 Reused tools

### Reused tools for mechanical repair

#### 1. Generic Wheel Press Tool (1311-1952)

For pressing Battery Cover Assy.  
This tool is used with Press Rubber Inlay (1315-7148)  
together for pressing Battery Cover Assy.

***Note! Former type of Press Tool can be utilized for pressing instead of this tool.  
Refer to 1.4 Optional Tools.***



#### 2. Press Clamp (1310-9176)

For pressing Adhesive NFC and Battery.  
When pressing Battery this tool is used with Press  
Spacer (1305-2638) together for pressing Battery.

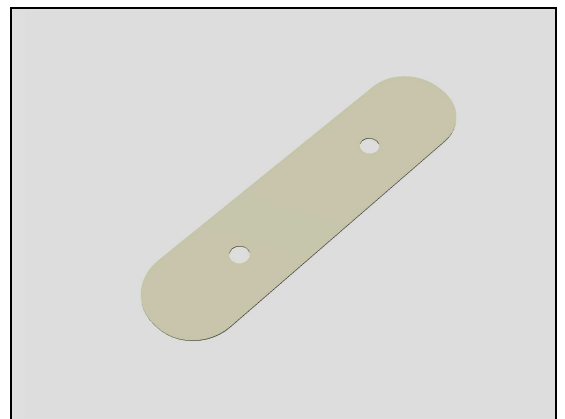


#### 3. Press Spacer (1305-2638)

For pressing Battery.  
This tool is used with Press Clamp (1310-9176) together  
for pressing Battery.



#### 4. Flexible Disassembly tool (1284-7796)



## 5. Media Cable Type C Cable (Black) (1302-1935)



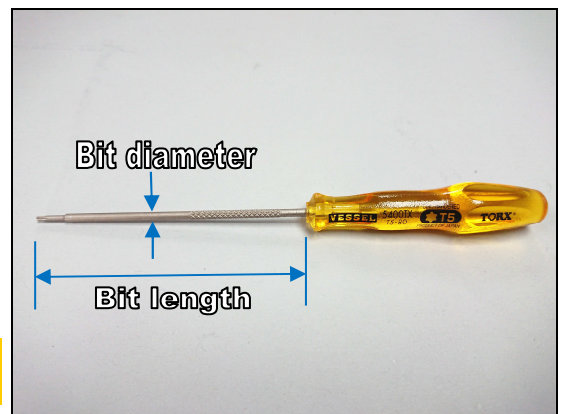
# 1.3 Local Sourced Tools

## Local Sourced tools for mechanical repair

### 1. T5 Screwdriver

For removing and tightening the Screw TORX M1.4 L3.24 Silver.

***The bit length is no less than 75mm, and bit diameter is no thicker than 2.5mm.***



### 2. Pencil with eraser end

For detaching the FP Module Assy from the Battery Cover Assy.



### 3. Suction Cup

For removing the Battery Cover Assy.

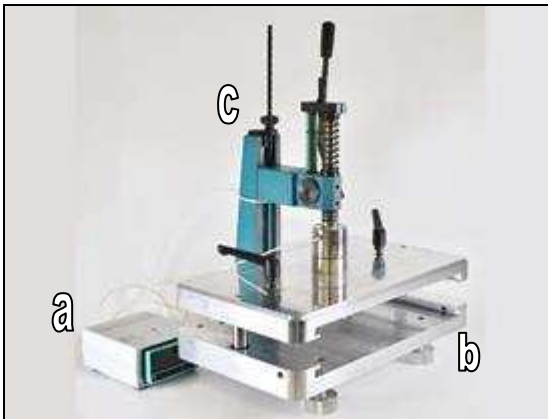


# 1.4 Optional Tools

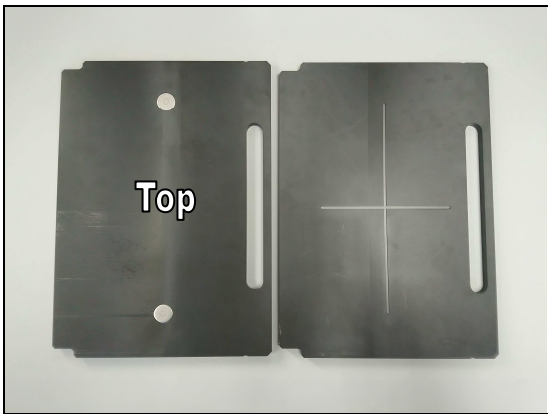
The tools for pressing Battery Cover Assy, the following tools (Former type of Press Tool) can be utilized instead of Generic Wheel Press Tool (1311-1952).

## Optional Tools for Pressing




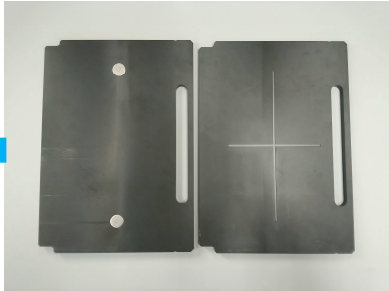
- 1. Former type of Press Tool
  - a) Load cell measurement kit (1274-3895)
  - b) Generic Fixture for Press Tool (1273-4413)
  - c) Toothed Rack Press (1281-2676)



- 2. Inlay adapter (1311-2202)  
(Include both Top and Bottom.)



### Requiring Tools matrix for Pressing Battery Cover Assy

Press Tool	Press Rubber Inlay	Inlay Adapter
<div>Generic Wheel Press Tool</div> <div></div> <div>1311-1952</div>	<div></div> <div>1315-7148</div>	No Required
<div>Former type of Press Tool</div> <div></div>		<div></div> <div>1311-2202</div>